



**Fast
renovation**

Design Tile

Gerflor®

Design Tile

the flexible interlocking ceramic tile



Performance

- Resistance to Rolling traffic: suitable with pallet jack
- 7,8 mm thickness tile: durability and longevity
- PUR Treatment: Micro scratch resistance and easy maintenance



Designs

- Ceramic tile look
- Wide range of wood and stone designs



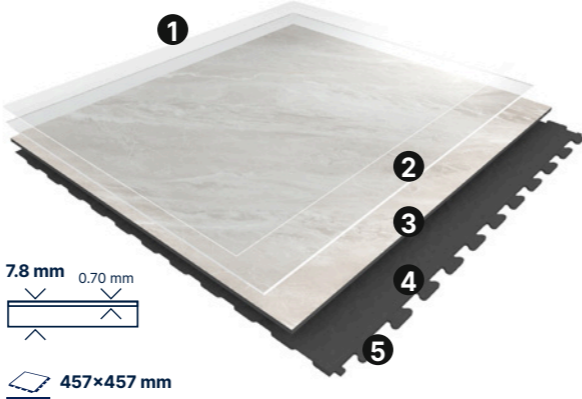
Easy Installation

- Adhesive Free Interlocking system: Easy to remove and reuse
- Renovation over ceramic
- Hidden dovetail join solution: seamless secure fit



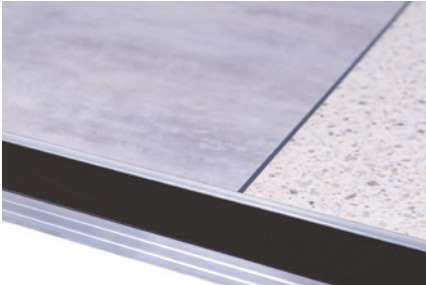
Safety & Well being

- R10 Slip resistance
- Walking comfort



- 1. PUR surface treatment**
- 2. Crystal wear layer & Structured emboss**
- 3. High-definition printed film**
- 4. Injection molded backing**
- 5. Hidden, interlocking dove tail system**

Do not forget the finishes!



Aluminum Ramp Profile (Screwed)
Width: 84mm / Gauge: 8mm / Length: 2.50m
Code: 06630001



Anti Bounce Mallet
5951



Entrance mat
1725 - Quickmat Tile

Renovation solution

for high traffic applications



Restaurants



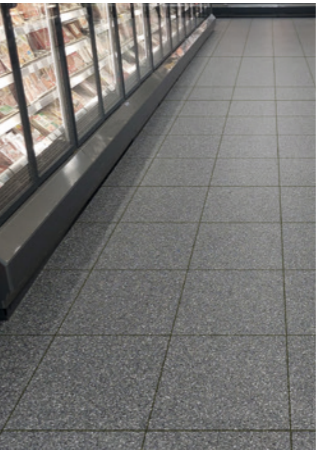
Retail Shops



Schools



Hotels



Supermarkets



Public Buildings

we care / we act



Recycling
100% recyclable
Up to 80% recycled content



Indoor Air Quality
TVOC < 100 micrograms / m³
No Formaldehyde



Reach
100% REACH compliant
Phthalate Free (except recycled content)
FREE of heavy metals
FREE of solvent



Wood designs

 457 x 457 mm



1550 Vintage Maple
Light grey grout



1551 Vintage Sand
Brown grout



1552 Vintage Ash
Light grey grout



1551 Vintage Sand



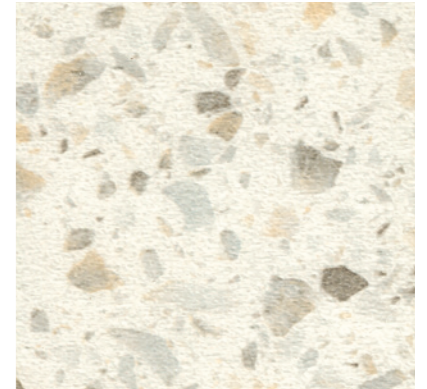
1552 Vintage Ash

Terrazzo Design

 457 x 457 mm



1554 Terrazzo Grey



1553 Terrazzo Cream
Dark grey grout



1554 Terrazzo Grey
Dark grey grout



1553 Terrazzo Cream



1549 Polished Concrete
Light grey grout

Stone designs

 457 × 457 mm



1544 Shalestone



1548 Limestone
Light grey grout



1555 Sandstone
Light grey grout



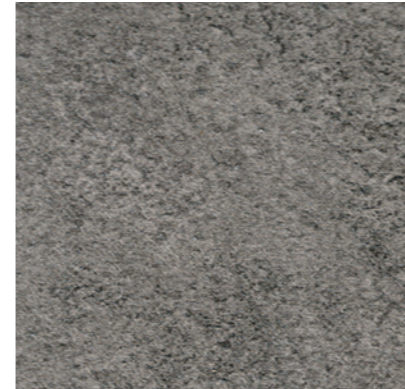
1544 Shalestone
Dark grey grout



1555 Sandstone

Mineral Design

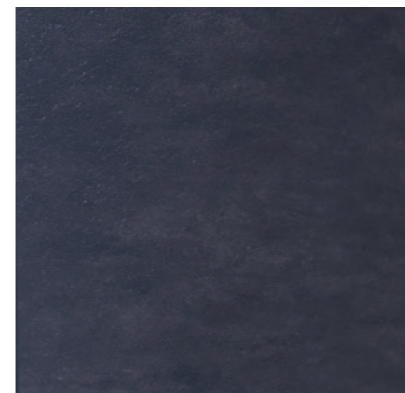
 457 × 457 mm



1545 Clay
Dark grey grout



1546 Granite
Dark grey grout



1547 Volcano
Black grout



1546 Granite



1547 Volcano

Design Tile

Description

Total Thickness	EN ISO 24346	mm	7.8
Thickness of the wearlayer	EN ISO 24340	mm	0.70
Weight	EN ISO 23997	g/m ²	12 000
Size	EN ISO 24342	mm	457 /457
Number of planks per box / sqm per box	-	-	5 / 1.04 sqm

Classification

Norm/Product Specification	-	-	EN ISO 10582
European Classification	EN ISO 10874	Class	34-43
Fire Rating	EN 13501-1	Class	Bfl-s1
Static Electrical Propensity	EN 1815	kV	< 2
Slip Resistance Wet	EN 16165 app.B (DIN 51 130)	Class	R10

Performances

Wear Resistance	EN 660.2	mm ³	≤ 2.0
Wear Group	-	group	T
Type Binder content	ISO 10582	group	I
Curling	EN ISO 23999	mm	≤ 1
Dimensional stability (norm)	EN ISO 23999	%	≤ 0.15
Residual Indentation	EN ISO 24343-1	mm	≤ 0.05
Castor chair test	ISO 4918	-	OK
Shore hardness	EN ISO 868	H _o	> 60
Thermal Conductivity	EN ISO 10456	W/(m.k)	0.25
Colour Fastness	EN 20 105 - B02	degree	≥ 6
Surface Treatment	-	-	PUR+
Chemical Products Resistance ⁽¹⁾	EN ISO 26987	-	OK

Environment/Indoor Air Quality

TVOC after 28 days	ISO 16000-6	micrograms/m ³	<100
--------------------	-------------	---------------------------	------

CE Marking



EN 14041



⁽¹⁾ Regarding the resistance to chemicals, please download the corresponding leaflet from our website.



The information contained in this document is valid from 01/06/2024 and is subject to change at any time without notice. In the context of constantly changing technology, our customers are responsible, prior to any use, for checking with us that this document is the version in force. Rubber leaves indelible stains on vinyl floorings: do not use mats with rubber backing and replace tubular furniture feet with those made of PVC or polyamide. Place mats of sufficient length at entrances to reduce outside sources of dirt.

We care / we act Our Commitments for a Sustainable future



CARBON FOOTPRINT*
-20 % kg CO₂ equivalent/m² between 2020 and 2025



BIOSOURCED CONTENT**
10 % by 2025



RECYCLED CONTENT
30 % by 2025



ADHESIVE FREE***
35 % by 2025



ANNUAL VOLUME RECYCLED
60 000 t by 2025



* Scopes 1 and 2 defined in the GHG protocol ** % of activity with biosourced materials *** % of activity - adhesive free solution